

PART- B - YCMOU Nashik

Index

Sr. No.	Description of Annexure	Page. No.
1.	Academic Programmes & Faculty Position	2
2.	Staffing	3
3.	Infrastructure At Headquarters	9
4.	Evaluation System	9
5.	Admission	10
6.	Learner Support Service	11
7.	Finance	14
8.	Any Other Information	15

PART- B

I. ACADEMIC PROGRAMMES & FACULTY POSITION

1. Explain the process of course Development at your institution/University by highlighting the various steps involved:

Steps involved in the Academic Programme/ Course Development:

1. Need analysis of the program based on feedback received from the target group.
2. Preparation of Concept Note and design of the program by concern school.
3. Nomination of Program Advisory Committee (PAC) for program development.
4. Approval to the program Structure, Syllabi and Curricula from School Council, PAC, Planning Board, Finance Committee, Academic Council and Board of Management.
5. Nomination of expert writers and editors for the program development.
6. Orientation cum workshop for the writers and editors.
7. Pilot testing cum weighting of the material.
8. Development of Learning Material in Self learning print and non-print formats.
9. Announcement and implementation of program.
10. Study Center Networking and Approval Process
11. Programme Admission Announcement.

2. Specify whether the following activities are done in-house or are out sourced, tick correct option.

TABLE 2.1

Activity	In-house	Out sourced
Development of course material	✓	
Production of Print material	✓	
Production of multi-media material	✓	
Interactive broadcasting/ teleconferencing,	✓	
Interactive Computer aided Learning	✓	
Web radio, mobile tab ready lectures	✓	

3. (a) Specify if programme/courses are adopted/adapted/translated and mention the source:

TABLE 2.2

Programme	Medium	Adopted	Adapted	Translated	Source
M.Sc. Mathematics	English	Yes	NA	NA	Center of Distance Education, Shivaji University, Kolhapur

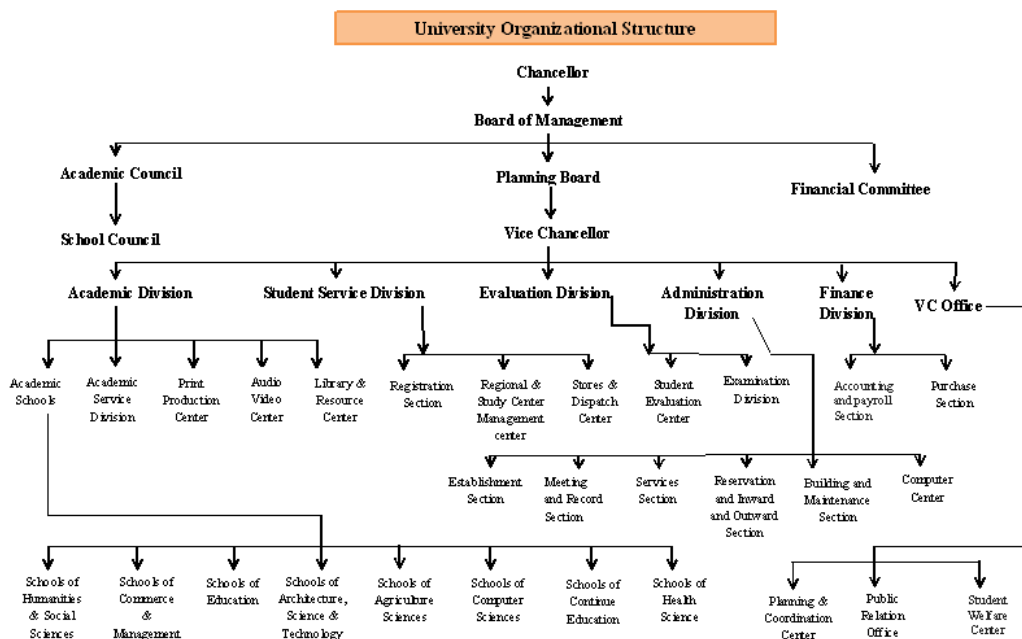
II. STAFFING

1. Information on Staff Strength

TABLE 2.3

Name of the Vice Chancellor/Head of the Institution	Prof.(Dr.)Manikrao M. Salunkhe YashwantraoChavan Maharashtra Open University, Dnyangangotri, Near Gangapur Dam, Nashik – 422222, MS, India Mobile: 09403774888, Tel- (0253) 2230228 Fax: (091) (0253) 2231205 Email: vc@ycmou.digitaluniversity.ac Websites: http://ycmou.digitaluniversity.ac/ http://www.ycmou.ac.in	
Name of the Pro Vice Chancellor/Rector(if any)	NA	
Name of the Registrar (Administrative Head)	Dr. PrakashAtkare YashwantraoChavan Maharashtra Open University, Dnyangangotri, Near Gangapur Dam, Nashik – 422222, MS, India Mobile: 09422247286, Tel-(0253) 2230470 Fax: (091) (0253) 2231205, 2231716 Email: registrar@ycmou.digitaluniversity.ac Websites: http://ycmou.digitaluniversity.ac/ http://www.ycmou.ac.in	
In case of Distance Education Institution (DEI) of a dual mode university/institution	Name of the Director	NA
	telephone/ mobile /Fax no.	NA

2. Provide a flowchart of Organization Structure:



3. Norms of the university/institution for number of Administrative staff for ODL programmes:

TABLE 2.4

		Permanent	Temporary	Total
1	At Headquarters	232	13	245
2	At Regional Centres (if any)	59	00	059
3	At Study Centres (if any)	00	27000	27000

4. Whether orientation/training in the ODL system is given to the following

TABLE 2.5

Particulars	Yes/No
Faculty Members	YES
Course Writers and Editor	YES
Coordinators of Study Centres	YES
Academic Counsellor	YES
Administrative Staff	YES
Other staff, at Regional Centers	YES

5. (a) Furnish details of faculty development (Distance Education) during the last 3 year:
(Details of all the faculty as per the format given in Table 2.6 is attached in **Annexure-I-Page Number 16**)

TABLE 2.6

No.	Name of Faculty: Dr. Surya Gunjal, Professor & Director, School of Agricultural Sciences	2013	2014	2015
(i)	Additional qualification acquired by faculty members	-	-	-
(ii)	Publications	-	-	-
(iii)	Participation in conferences / workshop / orientation programs	1	1	-
(iv)	Research project(s) undertaken	-	-	-
(v)	Conference / seminar/ workshop held	1	-	1

No.	Name of Faculty: Dr. Madhuri Sonavane, Asst. Professor, School of Agricultural Sciences	2013	2014	2015
(i)	Additional qualification acquired by faculty members	-	-	Ph. D.
(ii)	Publications	2	2	-
(iii)	Participation in conferences / workshop / orientation programs	-	2	5
(iv)	Research project(s) undertaken	1	1	-
(v)	Conference / seminar/ workshop held	-	-	-

No.	Name of Faculty: Rajendra M. Wagh, Asst. Professor, School of Agricultural Sciences	2013	2014	2015
(i)	Additional qualification acquired by faculty members	-	-	-
(ii)	Publications	2	4	1
(iii)	Participation in conferences / workshop / orientation programs	-	2	-
(iv)	Research project(s) undertaken	-	-	1
(v)	Conference / seminar/ workshop held	-	-	-

No.	Name of Faculty: Dr. Prakash A. Deshmukh, Asst. Professor, School of Commerce and Management	2013	2014	2015
(i)	Additional qualification acquired by faculty members	-	-	-
(ii)	Publications	3	3	-
(iii)	Participation in conferences / workshop / orientation programs	3	2	4
(iv)	Research project(s) undertaken	-	-	1
(v)	Conference / seminar/ workshop held	-	-	-

No.	Name of Faculty: Dr. Surendra Patole, Asst. Professor, School of Commerce and Management	2013	2014	2015
(i)	Additional qualification acquired by faculty members	Ph.D.	-	-
(ii)	Publications	1	1	2
(iii)	Participation in conferences / workshop / orientation programs	1	1	1
(iv)	Research project(s) undertaken	-	-	2
(v)	Conference / seminar/ workshop held	-	-	-

No.	Name of Faculty: Dr. Latika Ajbani, Asst. Professor, School of Commerce and Management	2013	2014	2015
(i)	Additional qualification acquired by faculty members	-	Ph.D.	-
(ii)	Publications	4	3	2
(iii)	Participation in conferences / workshop / orientation programs	2	3	-
(iv)	Research project(s) undertaken	-	-	2
(v)	Conference / seminar/ workshop held	-	-	-

No.	Name of Faculty: Madhav Palshikar, Associate Professor, School of Computer Science	2013	2014	2015
(i)	Additional qualification acquired by faculty members	-	-	-
(ii)	Publications	-	-	-
(iii)	Participation in conferences / workshop / orientation programs	1	1	2
(iv)	Research project(s) undertaken	-	-	-
(v)	Conference / seminar/ workshop held	-	-	-

No.	Name of Faculty: Dr. Pramod Khandare, Asst. Professor, School of Computer Science	2013	2014	2015
(i)	Additional qualification acquired by faculty members	Ph.D.	-	-
(ii)	Publications	-	-	-
(iii)	Participation in conferences / workshop / orientation programs	1	2	1
(iv)	Research project(s) undertaken	-	-	1
(v)	Conference / seminar/ workshop held	-	-	-

No.	Name of Faculty: Shubhangi Desale, Asst. Professor, School of Computer Science.	2013	2014	2015
(i)	Additional qualification acquired by faculty members	-	-	-
(ii)	Publications	-	-	-
(iii)	Participation in conferences / workshop / orientation programs	1	1	1
(iv)	Research project(s) undertaken	-	-	-
(v)	Conference / seminar/ workshop held	-	-	-

No.	Name of Faculty: Dr. Rajendra Vadnare, Professor and Director, School of Continuing Education.	2013	2014	2015
(i)	Additional qualification acquired by faculty members	-	-	-
(ii)	Publications	-	1	-
(iii)	Participation in conferences / workshop / orientation programs			
(iv)	Research project(s) undertaken	-	-	-
(v)	Conference / seminar/ workshop held	-	1	2

No.	Name of Faculty: Dr. Rucha Rajesh Gujar, Asst. Professor, School of Continuing Education.	2013	2014	2015
(i)	Additional qualification acquired by faculty members	-	-	M Sc.
(ii)	Publications	3	1	4
(iii)	Participation in conferences / workshop / orientation programs	3	2	3
(iv)	Research project(s) undertaken	-	-	1
(v)	Conference / seminar/ workshop held	-	1	-

No.	Name of Faculty: Ram Thakar, Asst. Professor, School of Continuing Education.	2013	2014	2015
(i)	Additional qualification acquired by faculty members	-	-	-
(ii)	Publications	4	-	-
(iii)	Participation in conferences / workshop / orientation programs	-	-	3
(iv)	Research project(s) undertaken	-	-	-
(v)	Conference / seminar/ workshop held	-	-	-

No.	Name of Faculty: Dr. Sunanda More, Associate Professor, School of Science and Technology.	2013	2014	2015
(i)	Additional qualification acquired by faculty members	MBA	-	-
(ii)	Publications	2	-	-
(iii)	Participation in conferences / workshop / orientation programs	5	2	-
(iv)	Research project(s) undertaken	-	-	-
(v)	Conference / seminar/ workshop held	1	-	-

No.	Name of Faculty: Chetana Kamlaskar, Asst. Professor, School of Science and Technology.	2013	2014	2015
(i)	Additional qualification acquired by faculty members	-	-	-
(ii)	Publications	-	-	1
(iii)	Participation in conferences / workshop / orientation programs	3	1	-
(iv)	Research project(s) undertaken	-	-	-
(v)	Conference / seminar/ workshop held	-	-	-

No.	Name of Faculty: Dr. Sanjivani Mahale, Associate Professor, School of Education.	2013	2014	2015
(i)	Additional qualification acquired by faculty members	-	-	-
(ii)	Publications	6	2	5
(iii)	Participation in conferences / workshop / orientation programs	4	3	8
(iv)	Research project(s) undertaken	-	-	1
(v)	Conference / seminar/ workshop held	-	-	-

No.	Name of Faculty: Dr. Suresh Patil, Associate Professor, School of Education.	2013	2014	2015
(i)	Additional qualification acquired by faculty members	-	-	-
(ii)	Publications	2	4	-
(iii)	Participation in conferences / workshop / orientation programs	3	4	-
(iv)	Research project(s) undertaken	-	-	-
(v)	Conference / seminar/ workshop held	8	5	-

No.	Name of Faculty: Dr. Vijaya .V Patil, Asst. Professor, School of Education.	2013	2014	2015
(i)	Additional qualification acquired by faculty members	-	-	Ph.D.
(ii)	Publications	-	4	6
(iii)	Participation in conferences / workshop / orientation programs	7	5	11
(iv)	Research project(s) undertaken	-	-	2
(v)	Conference / seminar/ workshop held	-	-	-

No.	Name of Faculty: Dr. KavitaSalunke, Asst. Professor, School of Education.	2013	2014	2015
(i)	Additional qualification acquired by faculty members	MA	-	-
(ii)	Publications	10	4	3
(iii)	Participation in conferences / workshop / orientation programs	7	6	7
(iv)	Research project(s) undertaken	3	3	4
(v)	Conference / seminar/ workshop held	-	-	-

No.	Name of Faculty: Dr. Dayaram D. Pawar, Asst. Professor, School of Education.	2013	2014	2015
(i)	Additional qualification acquired by faculty members	-	-	-
(ii)	Publications	-	3	2
(iii)	Participation in conferences / workshop / orientation programs	7	8	6
(iv)	Research project(s) undertaken	-	-	-
(v)	Conference / seminar/ workshop held	-	1	-

No.	Name of Faculty: S.S. Sonune, Asst. Professor, School of Education.	2013	2014	2015
(i)	Additional qualification acquired by faculty members	-	-	-
(ii)	Publications	-	-	-
(iii)	Participation in conferences / workshop / orientation programs	6	6	6
(iv)	Research project(s) undertaken	-	-	-
(v)	Conference / seminar/ workshop held	-	-	-

No.	Name of Faculty: Dr. SajjanThool, Asst. Professor, School of Education.	2013	2014	2015
(i)	Additional qualification acquired by faculty members	-	-	-
(ii)	Publications	4	6	5
(iii)	Participation in conferences / workshop / orientation programs	1	3	2
(iv)	Research project(s) undertaken	-	1	1
(v)	Conference / seminar/ workshop held	-	-	1

No.	Name of Faculty: Vijaykumar K. Paikrao, Asst. Professor, School of Education.	2013	2014	2015
(i)	Additional qualification acquired by faculty members	-	-	-
(ii)	Publications	1	2	5
(iii)	Participation in conferences / workshop / orientation programs	5	7	3
(iv)	Research project(s) undertaken	1	1	-
(v)	Conference / seminar/ workshop held	-	-	-

No.	Name of Faculty: Dr.HemantRajguru, Asst. Professor, Academic Service Division.	2013	2014	2015
(i)	Additional qualification acquired by faculty members	-	-	-
(ii)	Publications	1	-	1
(iii)	Participation in conferences / workshop / orientation programs	1	-	-
(iv)	Research project(s) undertaken	-	-	-
(v)	Conference / seminar/ workshop held	-	-	-

No.	Name of Faculty: Dr.MadhukarShewale, Asst. Professor, School of Education.	2013	2014	2015
(i)	Additional qualification acquired by faculty members	-	-	-
(ii)	Publications	1	1	1

(iii)	Participation in conferences / workshop / orientation programs	2	-	1
(iv)	Research project(s) undertaken	-	-	-
(v)	Conference / seminar/ workshop held	-	1	1

No.	Name of Faculty: Dr.Abhay R. Patil, Asst. Professor, School of Health Science.	2013	2014	2015
(i)	Additional qualification acquired by faculty members	-	-	-
(ii)	Publications	-	-	-
(iii)	Participation in conferences / workshop / orientation programs	-	2	-
(iv)	Research project(s) undertaken	-	-	-
(v)	Conference / seminar/ workshop held	-	-	-

No.	Name of Faculty: Dr.UmeshRajderkar, Associate Professor, School of Humanities and Social Science.	2013	2014	2015
(i)	Additional qualification acquired by faculty members	-	-	-
(ii)	Publications	-	-	-
(iii)	Participation in conferences / workshop / orientation programs	2	-	1
(iv)	Research project(s) undertaken	-	-	-
(v)	Conference / seminar/ workshop held	-	-	-

No.	Name of Faculty: Dr.SharankumarLimble, Professor, School of Humanities and Social Science.	2013	2014	2015
(i)	Additional qualification acquired by faculty members	-	-	-
(ii)	Publications	3	1	1
(iii)	Participation in conferences / workshop / orientation programs	4	1	2
(iv)	Research project(s) undertaken	-	-	-
(v)	Conference / seminar/ workshop held	-	-	-

No.	Name of Faculty: Prof. Dadasaheb M. More, Associate Professor, School of Humanities and Social Science.	2013	2014	2015
(i)	Additional qualification acquired by faculty members	-	-	-
(ii)	Publications	-	-	-
(iii)	Participation in conferences / workshop / orientation programs	1	1	1
(iv)	Research project(s) undertaken	-	-	-
(v)	Conference / seminar/ workshop held	-	-	-

No.	Name of Faculty: Praveen Ghodeswar, Asstt. Professor, School of Humanities and Social Science.	2013	2014	2015
(i)	Additional qualification acquired by faculty members	-	-	-
(ii)	Publications	6	1	3
(iii)	Participation in conferences / workshop / orientation programs	2	4	-
(iv)	Research project(s) undertaken	-	-	-
(v)	Conference / seminar/ workshop held	-	-	-

No.	Name of Faculty: Nagarjun Maruti Wadekar, Asstt. Professor, School of Humanities and Social Science.	2013	2014	2015
(i)	Additional qualification acquired by faculty members	-	-	-
(ii)	Publications	3	5	-
(iii)	Participation in conferences / workshop / orientation programs	4	1	4
(iv)	Research project(s) undertaken	-	-	-
(v)	Conference / seminar/ workshop held	-	-	-

III. INFRASTRUCTURE AT HEADQUARTERS

1. Norms of the university/institution for infrastructure for ODL programmes:

TABLE 2.7

		Space in sq. ft.	No. of Rooms
1	At Headquarters	272611.68	370
2	At Regional Centres (if any)	55941.24	82
3	At Study Centres (if any)	2268000	12600

IV. EVALUATION SYSTEM

1. Mode adopted for the following activities:

TABLE 2.9

	Activity	In-house/Outside Agency/Both
(i)	Paper setting Both In-house and Outside	In house
(ii)	Conduct of examination Both In-house and Outside	In house
(iii)	Declaration of results In-house	In house
(iv)	Assessing the examination papers both In-house and Outside	In house
(v)	Evaluators are same as those for Courses offered through Conventional mode	Yes

2. What is the policy with regard to:

I. Moderation

Moderation is done only for University Assessment and not for internal evaluation. University has started Online Evaluation from the academic year 2015-16 for all the scripts. Each answer script is assessed by the evaluator who is subject expert and is moderated by the moderator who is also subject expert for 100% and 05% moderation. Smart evaluation software takes care of auto totalling and its verification.

University has following policy for Moderation and Scrutiny of answer scripts.

Sr. No	Maximum Marks	Passing Level Marks	Area for 100 % Moderation	Area of 5 % Moderation	Scrutiny
01	80	32	24 to 31 Marks and above 48 marks on Answer scripts for general programme and above 56 marks marks on Answer scripts for professional programme	32 to 47 marks on Answer scripts	Remaining Answer scripts scrutinise
02	40	16	12 to 15 Marks and above 24 marks on Answer scripts for general programme and above 28 marks marks on Answer scripts for professional programme	16 to 25 marks on Answer scripts	Remains Answer scripts scrutinise

II. Re-evaluation

On demand facility of the re-evaluation is available for the students. Student need to apply online for re-evaluation within the given period in prescribed format after the declaration of the end examination result. Student answer script is assessed by another subject expert for the confirmation of marks scored by the students. If 10% difference is there in evaluation of two evaluators then only change is informed to the student.

III. Re-totalling

On demand re-totalling facility is available for the students.

3. What is the method adopted for evaluation of answer scripts, projects, assignments etc.?

University adopted Online Assessment method for all Answer scripts. All answer scripts are scanned at the University Head Quarter and coded scripts are sent to CAP centres at various Digital CAP centres for digital evaluation.

Evaluation of Project is done by the External Subject Expert appointed by the University and Internal Project Guide/ Supervisor. Examination and evaluation is held at Study Centers/ Exam Centers as per the guidelines defined by the University.

Purpose of Home Assignments is to provide continuous feedback about learning of the student that activity has been done at the study centre by the subject Counsellors.

V. ADMISSION

1. Student Admission is done by: (Put tick mark) Manual Online

- Headquarters
- Regional Centres
- Study Centres
- All the above

2. Specify criteria adopted for admission?

University follows Reservation Policy and Admission Rules defined by the State Government and approved by the Academic Council of the University. For some specific programmes entrance test and/ or merit wise criteria and minimum eligibility criteria is defined for the admission.

3. Specify the programmes for which the intake is fixed. Give details:

Table 2.10

No	Name of Programme (s)	Maximum No. of Intake
1	All Certificate Programmes	A division of 60 Students per Programme per Study Center
2	All Diploma Programmes	60 Students per Programme per Study Center
3	All Undergraduate Programmes	120 Students per Programme per Study Center
4	All Postgraduate Programmes	40 Students per Programme per Study Center

4. Do you allow flexibility of entry and exit in the following context:

- | | | |
|-----------------------------------------|-------------------------------------|-----|
| • Duration of Programme | <input type="checkbox"/> | No |
| • Horizontal Mobility | <input checked="" type="checkbox"/> | Yes |
| • Choice of courses | <input checked="" type="checkbox"/> | Yes |
| • Inter-disciplinary Approach | <input checked="" type="checkbox"/> | Yes |
| • Modular curriculum allowing easy exit | <input checked="" type="checkbox"/> | Yes |
| • CBCS introduced or not | <input checked="" type="checkbox"/> | Yes |

5. If yes, Given details:

CBCS Pattern is introduced as per the template and norms available on the website of the UGC

6. How do you promote your programmes? (Specify the media used):

- Public advertisement in all type media
- Information kiosk
- Use of social media
- Pre- admission Counselling at Study Centres, Regional Centres and at HQ
- Call Centers
- University Websites
- Informative Articles

7. Is there any policy for overseas student?

NO

8. In case you admit foreign students explain the modus operandi and the enrolment details including the geographical spread:

NA

VI. LEARNER SUPPORT SERVICE

1. Give details of the services to distance learners at each of these. State Yes or No:

Table 2.11

Services	Head Quarters	Regional Centres	Study Centres
Admission	YES	YES	YES
Counselling	YES	YES	YES
SLM distribution	YES	YES	YES
PCP	YES	YES	YES

Internal Assessment	-	-	YES
Term End Examination	-	-	YES
Evaluation of Term End examination	YES	YES	-
Any Other (Specify)			

2. State total number of Coordinators and Academic Counsellors working at Regional Centres in the following format: (*wherever applicable*) --

TABLE 2.12

Location of Regional Centre	Address of Study Centre	Name of Coordinator if any, on rolls of the institution	No. of programmes offered	Total No. of Academic Counsellors	Page No.
Amravati	Annexure –II	Annexure –II	Annexure –II	Annexure –II	33
Aurangabad	Annexure –III	Annexure –III	Annexure –III	Annexure –III	50
Mumbai	Annexure –IV	Annexure –IV	Annexure –IV	Annexure –IV	62
Nagpur	Annexure –V	Annexure –V	Annexure –V	Annexure –V	74
Nashik	Annexure –VI	Annexure –VI	Annexure –VI	Annexure –VI	81
Pune	Annexure –VII	Annexure –VII	Annexure –VII	Annexure –VII	91
Kolhapur	Annexure –VIII	Annexure –VIII	Annexure –VIII	Annexure –VIII	101
Nanded	Annexure –IX	Annexure –IX	Annexure –IX	Annexure –IX	117

3. Do you maintain databases? Explain the databases management system followed by your institution. Give details of computerization of various activities.

University has own 4 data base servers with latest hardware and software with mirroring facility. All the data is stored in to this server and also we take daily backup of the data in external hard disk.

University has done almost all computerization as -

- 100% online admission for approx. 7 lakhs students
- End to end examination management system including, Question bank creation, Question Paper Generation, Online delivery of Question Papers, Onscreen marking/Evaluation of Answer Books, Pre-examination, Post Examination, Online verification of certificates etc.
- Online Study Centre Management System
- Finance Accounting Software
- Grievance System for Students

4. (a) Is your website interactive/static?

Interactive

- (b) How does your website support distance learners?

Discussion Forum, e-Suvidha. Mobile App., SMS Alerts, Requests and Access to Content

5. How do you attend to student queries? Put tick mark.

- Face to face
- Telephone/Mobile
- Radio/Television

- Newsletter/bulletin
- E-mail
- Automatic interactive system
- All the above

If any other, specify : Posting answers/ reply to the queries posted by the students on the discussion forum made available on the websites

6. Give details of scholarships/financial assistance that are provide to distance learners.

Post-Matric Scholarship offered by the State Government is available for the students from Reservation Category. State Government Welfare Department approved 21 academic programmes of the University for the Academic Year 2014-15 and 2015-16.

University also provides full fees concession in the form of scholarship to blind, jail inmat etc.

7. Do you have placement cell? Give details.

Through University website, web-based placement services are available in the student login. Our Study Centers do provide and support our students for placement. Some of the companies like LupinPharmaceutical, Nafate Foundation, MKCL gives 100% placement to the students.

8. How do you provide feedback to learners on their performance?

Table 2.13

	Methods	Medium of Communication
Continuous Evaluation	<p>Continuous Evaluation of the students is done through Assignments, Seminars, Practicals, Library work etc.</p> <p>20-80% weightage is maintained in the course. Counsellors at the study centre evaluates each students and performance is shown to the students and reported on the marklist.</p>	Display on the Notice board of the study centers
Term-End Evaluation	<p>End examination is conducted by University in the month of May/June and Nov./Dec. of every academic year.</p> <p>Combined result/performance sheet of the Continuous Evaluation and Term End evaluation is given to the students after the declaration of the result.</p>	Combined result/performance sheet of the Continuous Evaluation and Term End evaluation is published on the university websites.

VII. FINANCE

1. Income and Expenditure relating to distance education during last three years

TABLE 2.14

	Income	Expenditure incurred	Sources of income
2015-16	146,35,89,496*	92,47,24,276	Fees/Sale of Agri. Products/ Publications etc.
2014-15	99,49,42,395	73,54,69,083	Fees/Sale of Agri. Products/ Publications etc.
2013-14	137,78,59,028	56,19,85,633	Fees/Sale of Agri. Products/ Publications etc.

* Income for the Year 2014-15 Rs. 9,75,15,270 is included.

2. Give details of the expenditure during the last financial year under various heads: For the F.Y. 2014-15, DEB-UGC allocated Rs. 330/- lacs to this University

TABLE 2.15 (Year 2014-15)

Sr.No.	Head of expenditure	Budget approval	Amount spent
1	Assistance for Human Resource	-	-
2	Development of Course material and Quality Assurance	35,00,000	80,74,792
3	Students Support Service	70,00,000	3,21,67,473
4	Staff Training and Development	17,50,000	19,86,152
5	Technology Support	35,00,000	78,16,840
6	Vocational Education and Training	35,00,000	45,63,685
7	Library	21,00,000	26,81,061
8	Research and Development	17,50,000	24,86,861
9	e-Content / e-Learning	-	-

3. Whether University maintains separate account for Distance Education? If Yes please give details thereof:

Table 2.16

Name of the Bank	NA
Address	NA
Bank A/C No	NA
Name of the Account Holder	NA
Designation of the Account Holder	NA
IFSC code	NA
MICR code	NA

VIII. ANY OTHER INFORMATION

Focus of the University is to provide quick and better services with quality education by using latest smart and efficient technology for and maximum automation.

This University achieved the goal of 100% Online Admission of all programmes of the University.

Online assessment of the answer scripts is further milestone which University achieved.

- LMS(Learning Management System) is developed to provide teaching-learning support to the students.
- Mobile Tab Ready Lectures are developed for some courses to give best teaching support anywhere-anytime on the Mobile or TAB.
- Academic programmes produced by the AVC(Audio Video Centre) of the university is made available on the U-tube and also on the website.